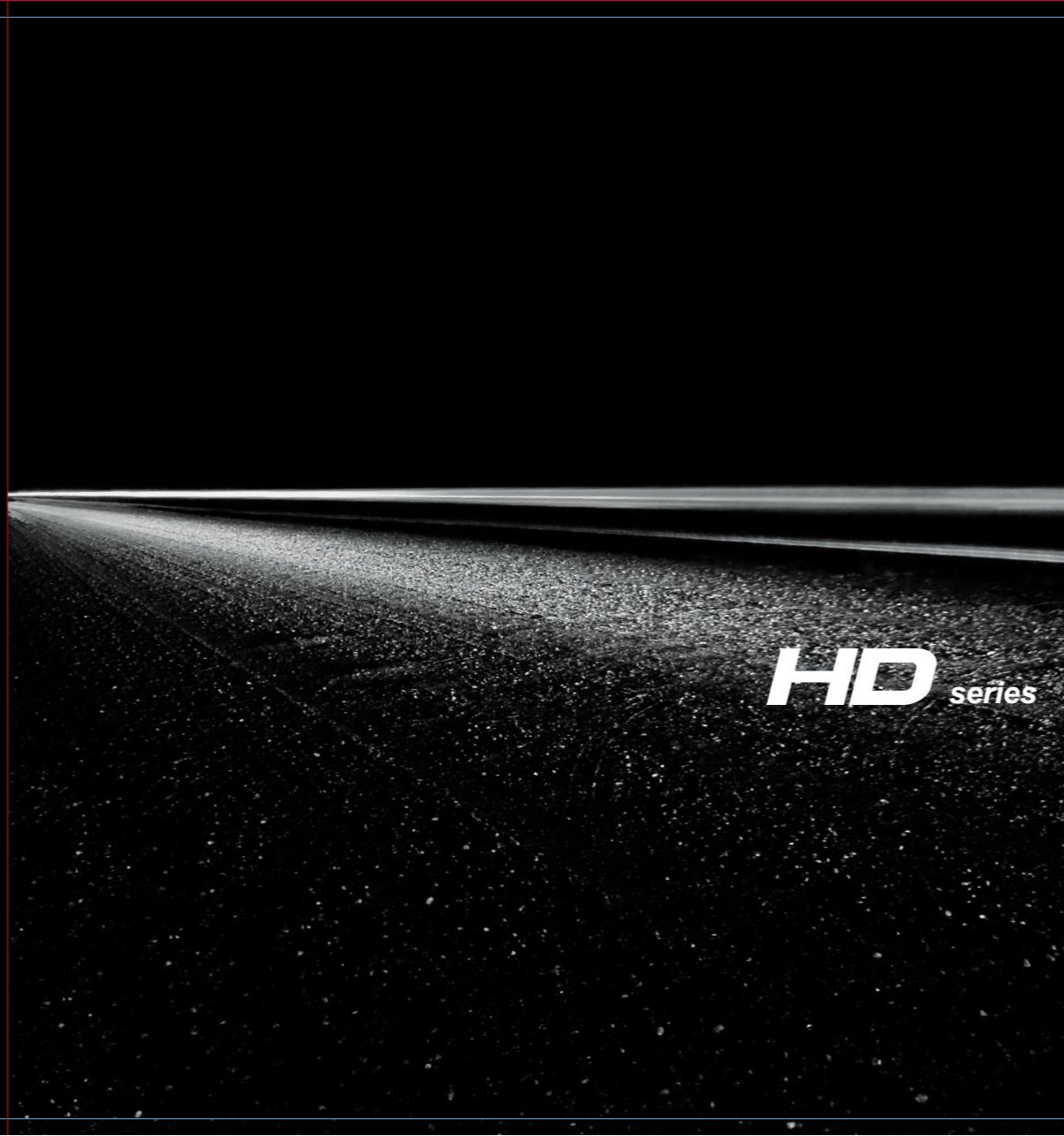


**ING YU PRECISION INDUSTRIES CO., LTD.**  
43-11, Sha-Tien Rd., Sha-Lu, Taichung **TAIWAN** 43354  
TEL: +886-4-26358569 E-mail: info@ingyu.com

More than a press producer, INGYU is devoted to creating the value for customers.

AC Design\_04-20071159



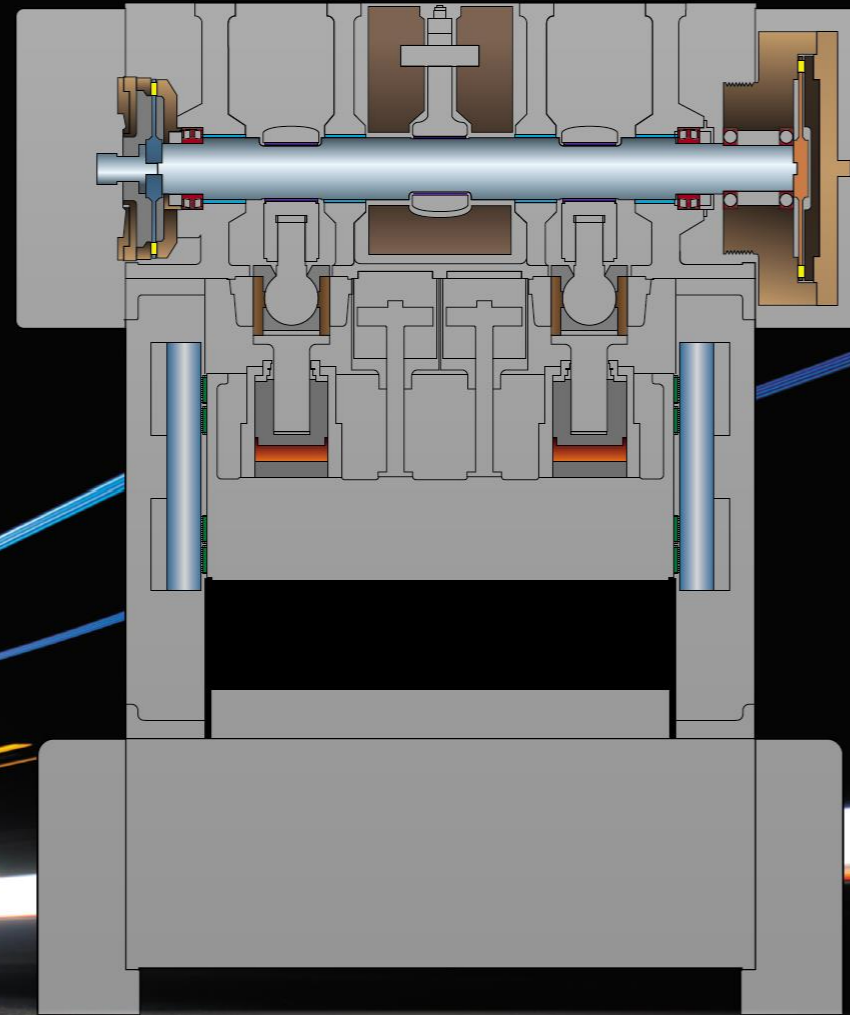
**HD** series



Create The Value

# Hightspeed Blanking Press





## Frame of cast iron and excellent design of structure

3 sets of massive frame resist deflection and reduce vibration.

## Dynamically balanced counter weight

Dynamically balancer reserves weight of upper die to eliminate the inertia produced by reciprocation.

## Hydraulic locking device of screw rods

Hydraulic locking device of screw rods eliminates the clearance to keep reciprocating accuracy.

## Circulating lubrication & cooler system

Oil temperature is controlled stably and cooling system is separated from circulation to prevent from condensing water inwardly.

## 6 Points of crank supporting

The distance between supporting is short to resist deflective stress. 2 bearings and 4 hydro-dynamic brass bushings are applied to get smaller clearance. Better supporting, less power consumption.



## Separated clutch and brake

The torch of separated clutch & brake is big and braking time is less. Balanced load at two side can reduce wear of bearings.

## Guiding system of slide

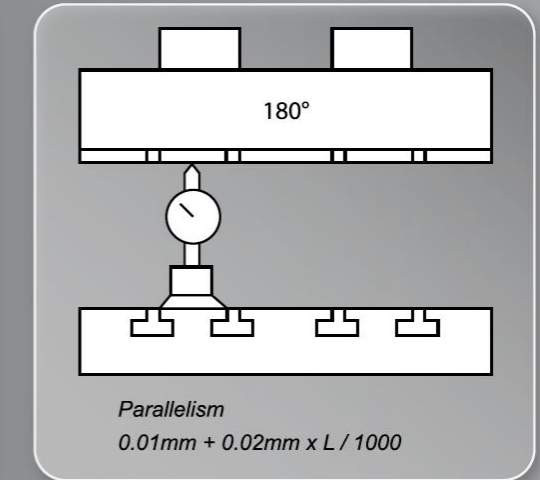
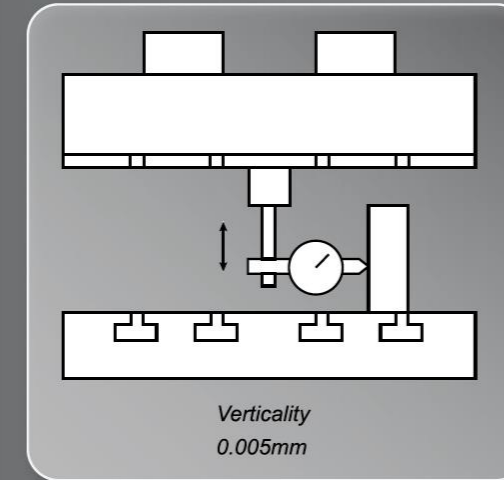
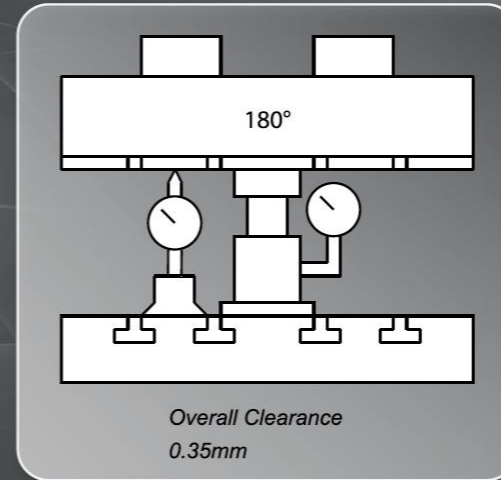
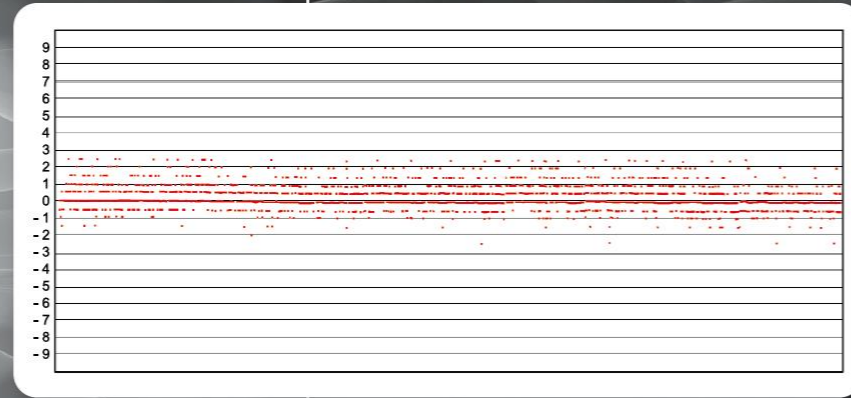
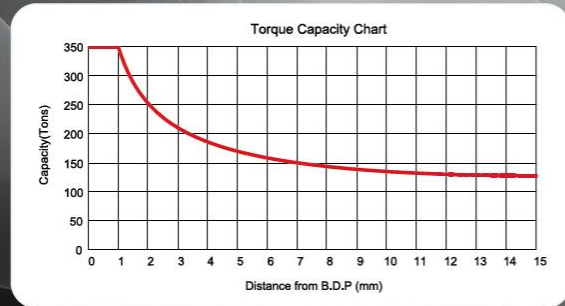
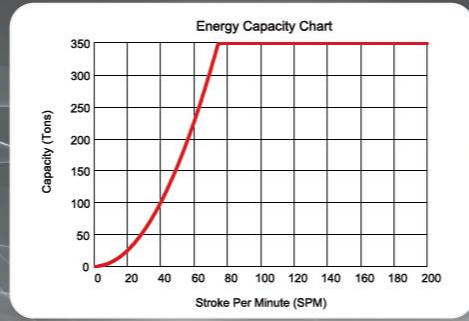
Dual plungers isolate slide from front-to-back movement and bear up eccentric load. 8 square long guide gibs and linear bearings are applied to absorb the sideward thrust during stamping.

## Slide quick lift

The height of slide quick lift is 70mm. It helps to solve the tooling problem quickly. After trouble shooting, slide return to original height and B.D.C kept still.



# Performance



# Control

INGYU Service

e-mail



Maintain Dept.



Tooling Room



Message



ERP Terminal



MPI



MPI



RS485

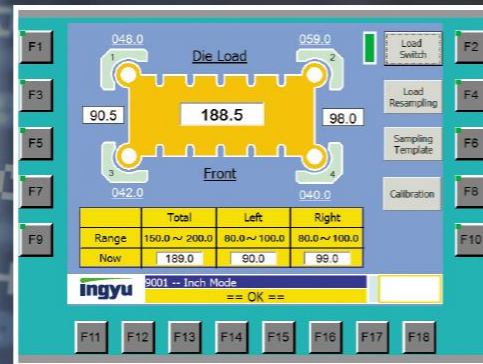


# Monitoring

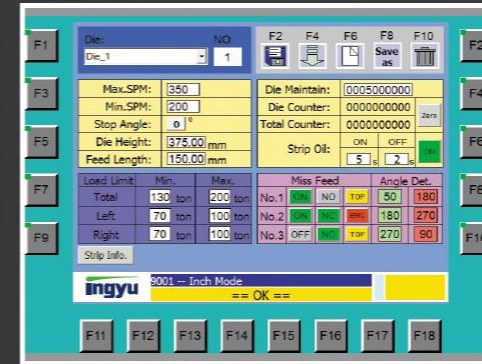
Main page



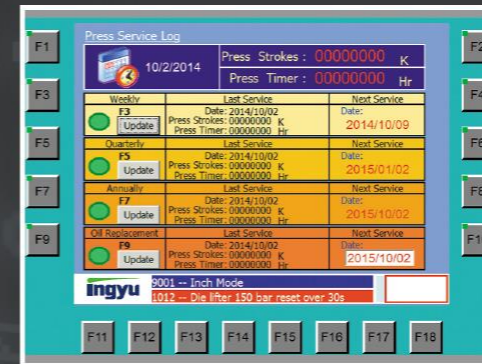
Load cell function



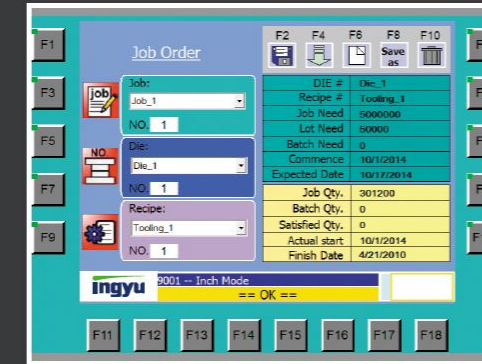
Die information



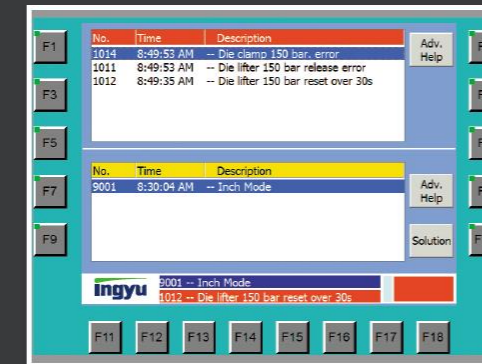
Service log



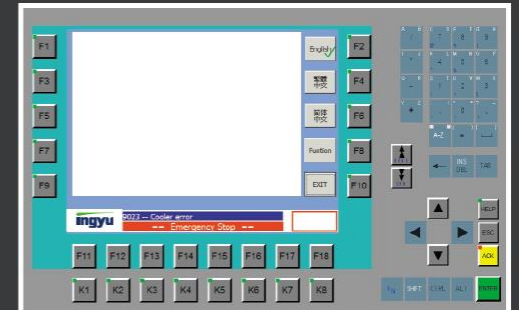
Job order



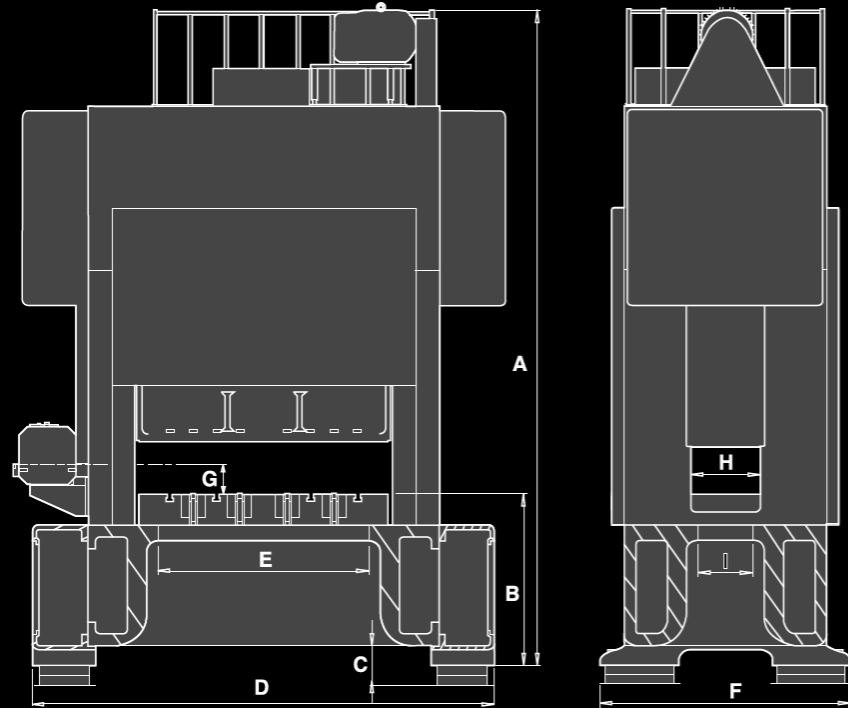
Alarm records



Customized program



# Specification



Machine Specification					
Type		HD-220	HD-300	HD-350	HD-450
Capacity	tons	220	300	350	450
Slide Stroke	mm	30	30	30	30
Press Speed	spr	200 - 500	150 - 400	150 - 400	100 - 350
Shutheight	mm	500	520	520	560
Area of Bolster	mm	1700 x 950	2000 x 1050	2300 x 1100	2600 x 1200
Thickness of Bolster	mm	200	220	220	250
Area of Slide	mm	1700 x 650	2000 x 750	2300 x 800	2600 x 900
Shutheight Adjustment	mm	50	60	60	60
Main Motor	hp	40	50	60	75
Dimension of Press					
Height of Press (A)	mm	4450	5110	5110	6086
Height for Operation (B)	mm	1100	1420	1420	1800
Height for Scrap out (C)	mm	310	380	380	480
Width of Press (D)	mm	3040	3520	3820	4380
Width of Bed Opening (E)		1500	1600	1900	2150
Depth of Press (F)	mm	1600	1800	1800	2100
Height of Feed Line (G)		225 ± 20	230 ± 20	230 ± 20	250 ± 20
Width of Upright Opening (H)	mm	450	470	470	530
Depth of Bed Opening (I)		350	400	400	480
Net Weight	tons	36	54	63	80

We reserve the right to modify all data contained in this catalogue without notice.  
(Please contact with us for detail specification & dimension of the press.)

Standard Accessories	Optional Accessories
Slide Adjust Motor (0.01mm)	Slide Quick Lift (70mm)
Front-rear Safety Guard	NC Roller Feeder
Joint For Air Gun x 1	Gear Change Roll Feeder
Mis-feed Joint x 3	Straightener (Lamination)
Material-end Joint x 1	Dual Head Coiler (Lamination)
Batch/cam Joint x 5	
Inverter	
Siemens Control System	
Anti-vibration Spring Type Cushion	
Die Arm	
Die Lifter	

NC Roller High Speed Feed			
Type	FNR300	FNR400	FNR500
Max Width (mm)	300	400	500
Max Thickness (mm)	2.3		
Pitch Range (mm)	0-1000		
Max Output (m/min)	60		

Gear Change High Speed Feed			
Type	FDG300	FDG400	FDG500
Max Width (mm)	300	400	500
Max Thickness (mm)	2.3		
Pitch Range (mm)	12-360		
Max Output (m/min)	60		

Straightener With S Loop For Lamination			
Type	FRS300	FRS400	FRS500
Max Width (mm)	300	400	500
Drive Motor (hp)	3	5	5
Valid Thickness (mm)	0.3 -1.2		
Max Output (m/min)	60		

Dual Head Uncoiler For Lamination (Non-motor, Hydraulic Expand)			
Type	DCT300	DCT400	DCT500
Max Width (mm)	300	400	500
Max Load Per Head (ton)	2	3	3
Max. Outside Dia (mm)	1200		
Valid Inside Dia (mm)	450-520		

# HD350 Layout

